

# JPEG2000 technology empowers the real studio quality

**JP2pro 750R** is a professional HDTV recorder using the JPEG2000 image coding technology. You can use both Hard Disks and Solid State Disks (Flash Memory). Up to approximately 96 hours of studio quality HDTV 4:2:2 10-bit signals can be recorded by using the highest capacity HDD Cassette. Advantage of high performance, versatility and affordability is suitable for very wide applications.

## FEATURES

- ◆ Easy exchangeable recording cassette (HDD or SSD)
- ◆ Uncompressed picture quality by LOSSLESS mode
- ◆ More than 90 hours recording time at studio quality
- ◆ VTR like control panel operation
- ◆ Very high reliability with RAID1 (Mirroring)
- ◆ Simultaneous record/play
- ◆ Sequence CLIP playback
- ◆ Interval (Time Laps) recording
- ◆ Very quick search and smooth slow motion
- ◆ INSERT and ASSEMBLE editing
- ◆ Remote control by RS-422, GPI and Ethernet
- ◆ HD-SDI in/out.
- ◆ 8 channels of digital audio
- ◆ LTC/VITC Time code
- ◆ VANC META data
- ◆ Character display on the MONITOR OUT
- ◆ High reliability and low maintenance cost

## QUALITY & RECORDING TIME

The great advantage of the **JP2pro 750R** is its superior picture quality and long recording time. You can achieve uncompressed quality by the JPEG2000 LOSSLESS recording mode. By using JPEG2000 lossy compression mode, you can record very long hours while keeping the studio quality. There are three lossy compression modes, High Quality mode (HQ), Long Play mode 1 (LP1) and Long Play mode 2 (LP2). Relationship between the picture quality and the recording time is shown below.

| Compression Mode | Picture Quality   | Recording Time |             |
|------------------|-------------------|----------------|-------------|
|                  |                   | 900 GB HDD     | 3 TB HDD    |
| LOSSLESS         | Uncompressed      | Approx. 4.8H   | Approx. 16H |
| HQ               | Visually lossless | Approx. 14H    | Approx. 48H |
| LP1              | HD-D5 class       | Approx. 21H    | Approx. 72H |
| LP2              | HDCAM class       | Approx. 28H    | Approx. 96H |

(NOTE) Recording time is measured with the ITE HDTV Standard Evaluation Material (1920x1035 8-bit). Total recording time varies depending on the bit depth and the picture complexity.

## REMOVABLE RECORDING CASSETTE

Removable HDD/SSD Cassette enables easy exchange of the recording media. As all information is involved in the cassette, it is ideal for storage and transportation. The Flash Memory base SSD Cassette has better shock and temperature proof performance. So it is suitable for OB vans, helicopters, and the other mission critical work.



Removable SSD Cassette

## VTR-LIKE CONTROL PANEL

Front Control Panel option enables VTR-like operation including REC, PLAY, FF, REW, JOG, VAR, SHUTTLE and MARK/SERACH. Also, all set-up items of the **JP2pro 750R** such as VIDEO, AUDIO, TIME CODE, GEN-LOCK, CONTROL-MODE, CONFIGURATIONS, and LIST (REC-file, CLIP, CUE and SEQUENCE) can be controlled from this panel.



Front Control Panel option

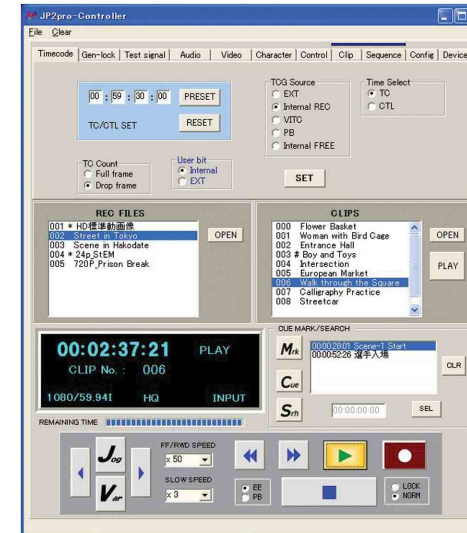
## SIMULTANEOUS RECORD/PLAY

You can reproduce the recorded files or CLIPs without disturbing the continuous recording. Such functions as PLAY, FF, REW, JOG, VAR, SHUTTLE, MARK/SERACH and CLIP SEQUENCE PLAYBACK are possible. This feature is useful for the time-shift application. The table below shows the possible configuration. (When using optional high speed 10K HDD Cassette)

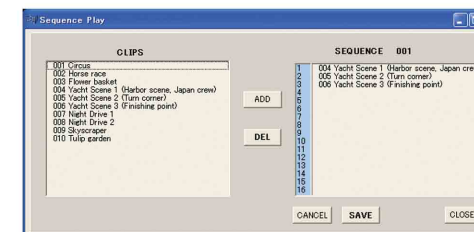
| RAID   | Capability of Simultaneous Record/Play |     |     |     |
|--------|----------------------------------------|-----|-----|-----|
|        | LOSSLESS                               | HQ  | LP1 | LP2 |
| RAID-0 | NO                                     | YES | YES | YES |
| RAID-1 | NO                                     | NO  | NO  | YES |

## CONTROL UTILITY SOFTWARE

Dedicated control utility software is included in the Ethernet control option. From the GUI on your PC, you can control all of the recorder functions. Also you can use this option for achieving synchronous multi-machine operation.



JP2pro-controller (GUI)



Sequence-play set-up dialog

## HD-SDI ANC DATA

**JP2pro 750R** can record and reproduce the ANC data transmitted on the ancillary data area of the HD-SDI interface. Those are:

- ◆ Embedded audio signal (8 channels)
- ◆ Vertical interval time code and user bits (VITC)
- ◆ Vertical ancillary data (VANC)
- ◆ Payload identifier (SMPTE 352M)

## JPEG2000 FILE TRANSFER

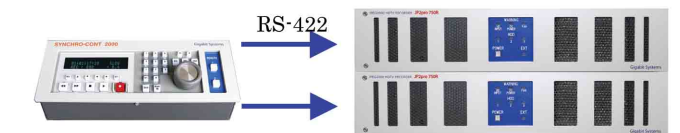
File format of the JPEG2000 is an ISO/IEC international standard. With an additional Gigabit Ethernet option, you can transfer the JPEG2000 files between host computers and **JP2pro 750R** recorders.

## APPLICATIONS

- **Broadcasting, production**
  - ◆ Studio recorder
  - ◆ Time shift
  - ◆ CM bank
  - ◆ Field production
  - ◆ Sports shootings
  - ◆ External storage for non-linear editing
- **HDTV moving picture source**
  - ◆ Museums, Exhibitions
  - ◆ Science research
  - ◆ Engineering Dep. Manufacturing Dep.
- **Special purposes**
  - ◆ Security (Time laps)
  - ◆ Medical imaging
  - ◆ 3D HDTV (x2 synchronous rec/play)
  - ◆ Digital cinema (2K/24P, 720P)
  - ◆ 4:4:4(4) (Lossless + x2 synchronous rec/play)
  - ◆ Ultra High definition (x4, x8, x16 synchronous rec/play)

## SYNCHRONOUS OPERATION

Combination of two or more **JP2pro 750R** recorders achieve higher-grade image recording than HDTV, such as 4:4:4, 3D, 4K etc. A fully synchronized operation by an optional SYNCHRO-CONT 2000 controller or Ethernet option, **JP2pro 750R** can record and reproduce Dual-link, Quad-link, Octal-link HD-SDI.



SYNCHRO-CONT 2000

JP2pro 750R x2

Dual-link system

## ORDER INFORMATION

| Products | Standard REC/PLAY  | JP2pro 750R  |
|----------|--------------------|--------------|
|          | Playback only      | JP2pro 750P  |
|          | DC battery version | JP2pro 750RB |

| Options |                            |                   |
|---------|----------------------------|-------------------|
|         | Front control panel        | OP-CON-01         |
|         | Remote controller          | SYNCHRO-CONT 2000 |
|         | Ethernet Control (inc GUI) | OP-ETH-01         |
|         | 1.5/3 TB HDD cassette      | OP-HDD-02/05      |
|         | 10K HDD cassette           | OP-HDD-03         |
|         | SSD cassette               | OP-SSD-01/02      |
|         | Lossless REC/PLAY          | OP-RAM-01         |
|         | Simultaneous REC/PLAY      | OP-SRP-01         |
|         | VANC                       | OP-ANC-01         |
|         | 2K (2048x1080) mode        | OP-DCI-01         |